

Discover Your Lillie Road



An Activity Trail for Families

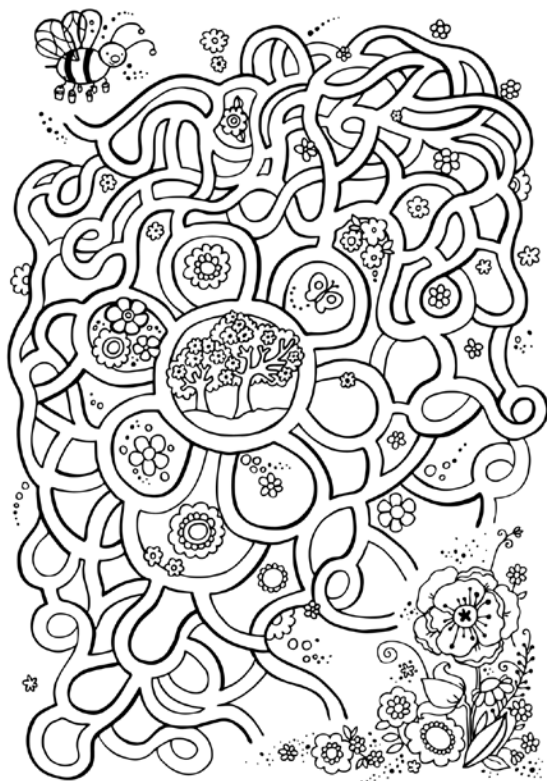


Urbanwise.London

Normand Park

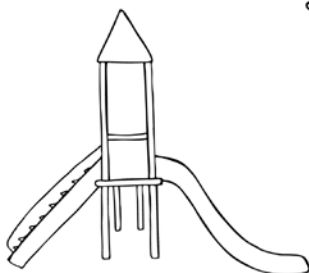
Normand Park is a great place to visit to enjoy nature and play in the playground.

Help this busy bee find her way to one of the park's beautiful flowers through the maze.



Who is in the Playground?

Put you and your friends in the playground and add some more fun play equipment.



North End Road

North End Road is a wonderful place to explore, with a variety of fruits, vegetables, food and useful things from all over the world. See if you can spot these local shops in this word search.

- Jaffa Bakehouse
- Filo Furniture
- Al-ghazal
- Kaminski
- Iceland
- Bella
- Dickenson
- Manar
- Co-op
- Cex

S	Z	R	H	X	J	A	M	G	F	K	C	F	E	Q
G	A	I	C	X	V	X	D	A	I	Y	B	Y	J	M
G	T	M	C	O	D	S	I	X	L	J	N	D	A	I
D	S	E	K	E	N	G	C	B	O	A	O	V	F	U
I	Z	T	D	C	L	E	K	B	F	U	A	J	F	J
A	S	B	Q	T	I	A	E	A	U	R	L	R	A	W
Z	K	U	A	Z	M	Q	N	N	R	V	G	Z	B	O
B	C	P	P	S	A	T	S	D	N	E	H	V	A	X
U	J	T	E	O	N	R	O	E	I	H	A	K	K	M
O	F	Q	V	G	A	V	N	C	T	U	Z	J	E	B
N	J	L	U	H	R	I	U	O	U	O	A	N	H	H
K	A	M	I	N	S	K	I	O	R	R	L	B	O	P
Y	L	V	C	E	O	W	W	P	E	U	A	V	U	Y
N	J	I	E	E	M	H	C	C	L	X	Y	Z	S	K
Z	T	I	X	J	A	C	Q	B	E	L	L	A	E	C

Look at the photo from the 1960s of North End Road Market below. How does it look different today? You can write on the photo!

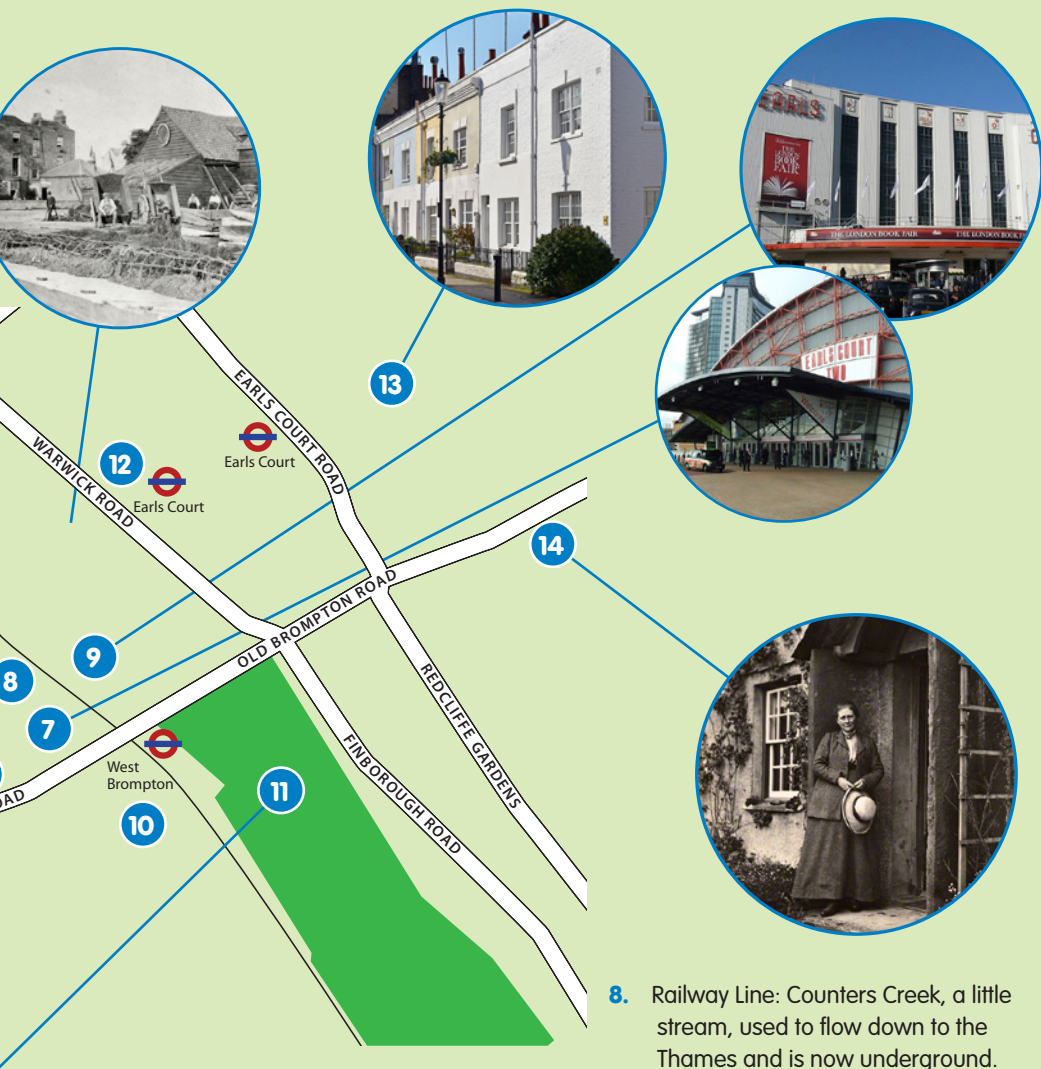


Lillie Road History Trail

Points of Interest

1. Normand House was built on this site in the 17th century. The building was bombed in the second world war and Normand Park created in 1952.
2. Clem Atlee Estate is named after Clement Atlee who was Labour party leader 1945 -1951.
3. North End Road and market is over 130 years old.
4. Sir John Lillie lived here in a home called The Hermitage in the nineteenth century (Lillie Road is named after him) and he is buried in West Brompton cemetery.
5. The Empress State Building is a skyscraper built in 1961, named after the Empress Hall which was here over a hundred years ago.
6. The Metropolitan Police Museum.
7. Earls Court 2 exhibition centre was here from 1991 – 2017.





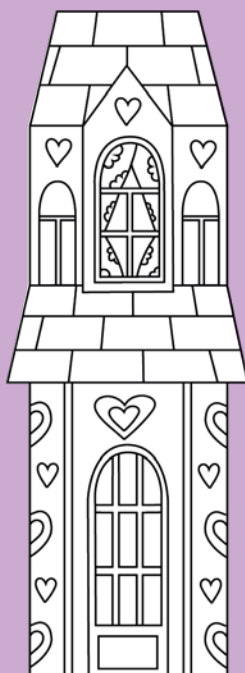
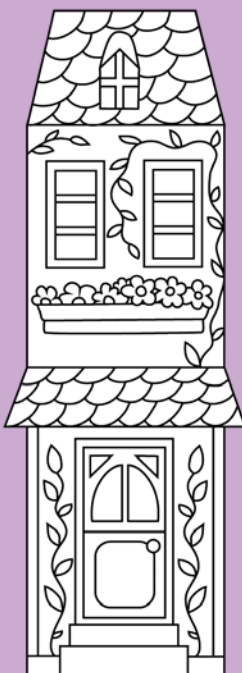
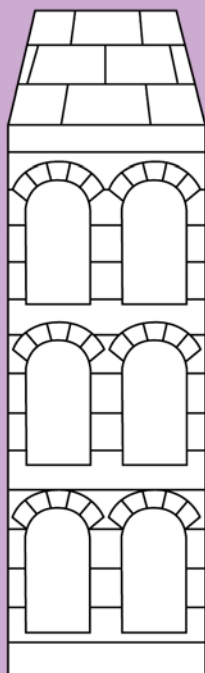
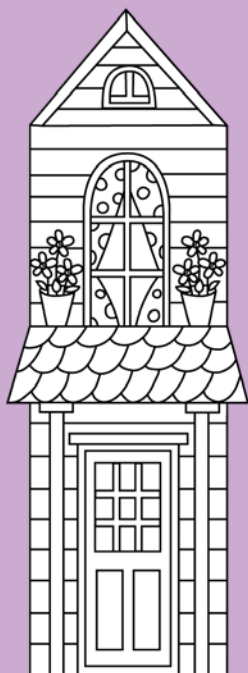
8. Railway Line: Counters Creek, a little stream, used to flow down to the Thames and is now underground.

- 9.** Earls Court 1 exhibition centre was here from 1937 to 2017.
- 10.** Lillie Square: some new housing is on the site of the Lillie Bridge Grounds which in the nineteenth century hosted boxing, athletics, cricket and football.
- 11.** West Brompton Cemetery was built in 1840. There are many famous people buried here and it is a great spot for wildlife.
- 12.** Earls Court Station was built in 1869 on the site of Earls Court farm.
- 13.** Earls Court Village.
- 14.** Beatrice Potter, author of Peter Rabbit lived in a house on this site (now Bousfield School).

Lillie Road Homes

Lillie Road has all sorts of different types of homes.

Use your colours to decorate your own Lillie Road houses.



There are many secret doorways in Lillie Road and its surrounding streets. See if you can find some of the ones below and then draw your own.



Brompton Cemetery

Brompton Cemetery is a special place with many notable people buried here, each with their own story. It is also full of symbols, see if you can spot any of the ones below among the gravestones.

Wolf
an American Indian



Thistle
a Scottish person



Sword
a soldier



Angel
stands for goodness



Urn
means death



Ivy
means we remember you forever



Mask
an actor



Cannon balls
a Soldier



Lily
stands for purity



Palm
triumph of life



Chain and anchor
faith in salvation



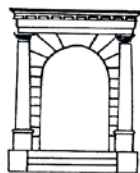
Shaking hands
means 'we hope to see you soon'



Lion
a brave person



Arch
gateway to heaven



Broken column
died before they were old



How many squirrels can you see in the cemetery today? Make a tally chart.

--



A Brief History of Lillie Road

Lillie Road is named after Sir John Scott Lillie who first laid out the eastern part of the road in 1826. Some of the houses he built are still here today, like Rosa Villas and Hermitage Cottages. When Lillie Road was built, Earls Court was a collection of homes, grand estates and market gardens clustered around a stream called Counter's Creek. Fruits and vegetables were grown here and taken to Covent Garden market every day by horse-drawn cart.

During Victorian times, there were many new streets and crescents built and the railway arrived, linking up new residents with central London. In 1887 an entrepreneur called John Robinson Whitley transformed 23 acres of land near the railway line into an exhibition ground. This spectacular covered space had gardens, rides, pavilions and a grand arena where he staged Buffalo Bill's Wild West Show starring sharp shooter Annie Oakley (below right) and Chief Long Wolf from the Sioux tribe.

By the early 1900s Earls Court held many attractions including the Great Wheel which gave views as far away as Windsor Castle. It was like an Edwardian version of Chessington World of Adventure! Imre Kiralfy (below), a Hungarian showman built the Empress Hall theatre, created a huge pool underneath and staged ever more amazing shows, like The International Fire Exhibition.

The area continued to be famous as an entertainment venue when Earls Court One was built in 1937. Over the years it has staged exhibitions, pop concerts, and all kinds of shows. Earls Court Two was built in 1991, extending the entertainment opportunities. Today, the exhibition centres are no longer there and their space is due to be filled with new homes. Lillie Road remains a vibrant place to live or visit with plenty of exciting things to do at any time of the day or evening!

